

DESIGN REVIEW  
09.12.2017

Site  
information

1:200 Model photos

Floor plans

1:200 Site model

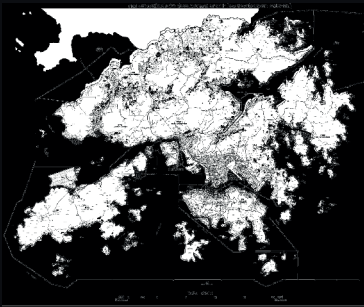
Concept model

Structure &  
Infrastructure





LEKKI, LAGOS STATE, NIGERIA



LEKKI & HONG KONG ON THE SAME SCALE

BELOW: MAP OF LEKKI, 1:250,000







## CLIENT

Ajah was founded around 350 years ago by Ogunsemo and Ojupon families. British Colonial officials helped establish the city as a strategic T-Junction between Lagos, the villages to the East of Lekki, and those North of Ajah, such as Addo or Langbasa.

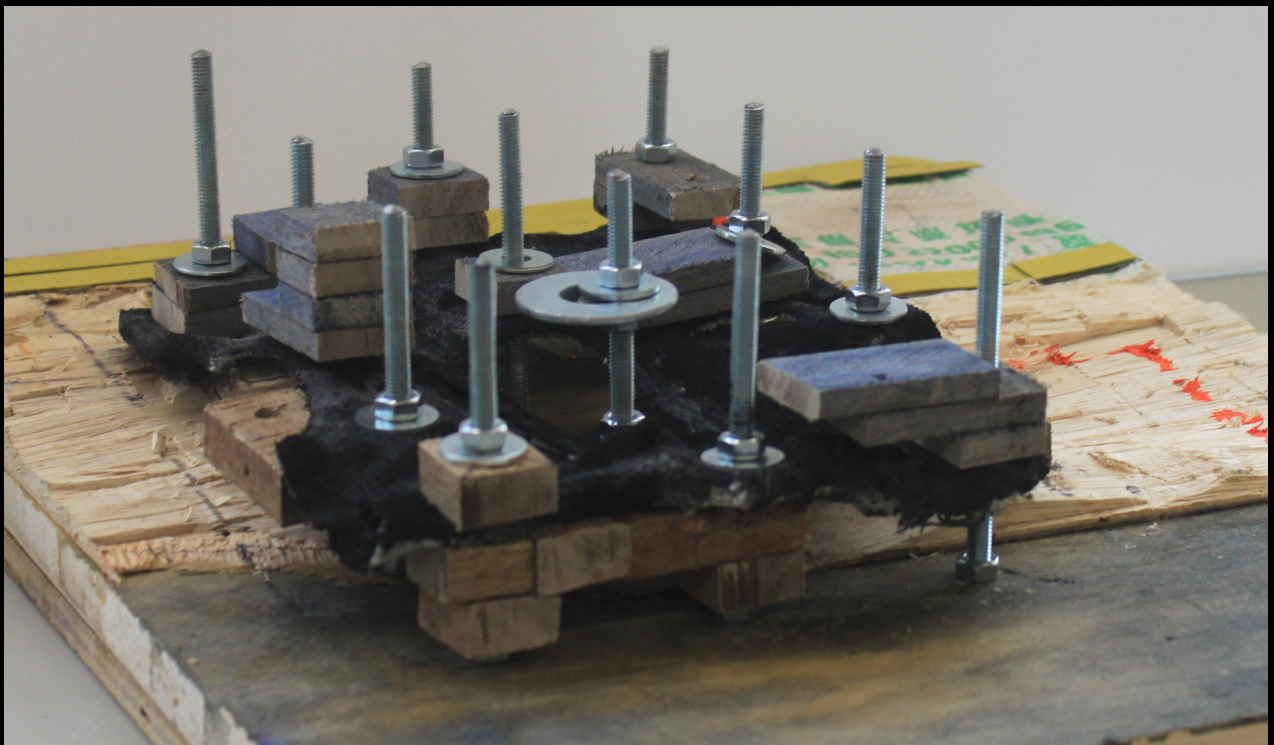
The first Chief of Ajah, Ogunsemo Anadupo, gave parts of Ajah's lands to 42 Chiefs' families and 10 higher rank Chief families - 10 King Mikas.



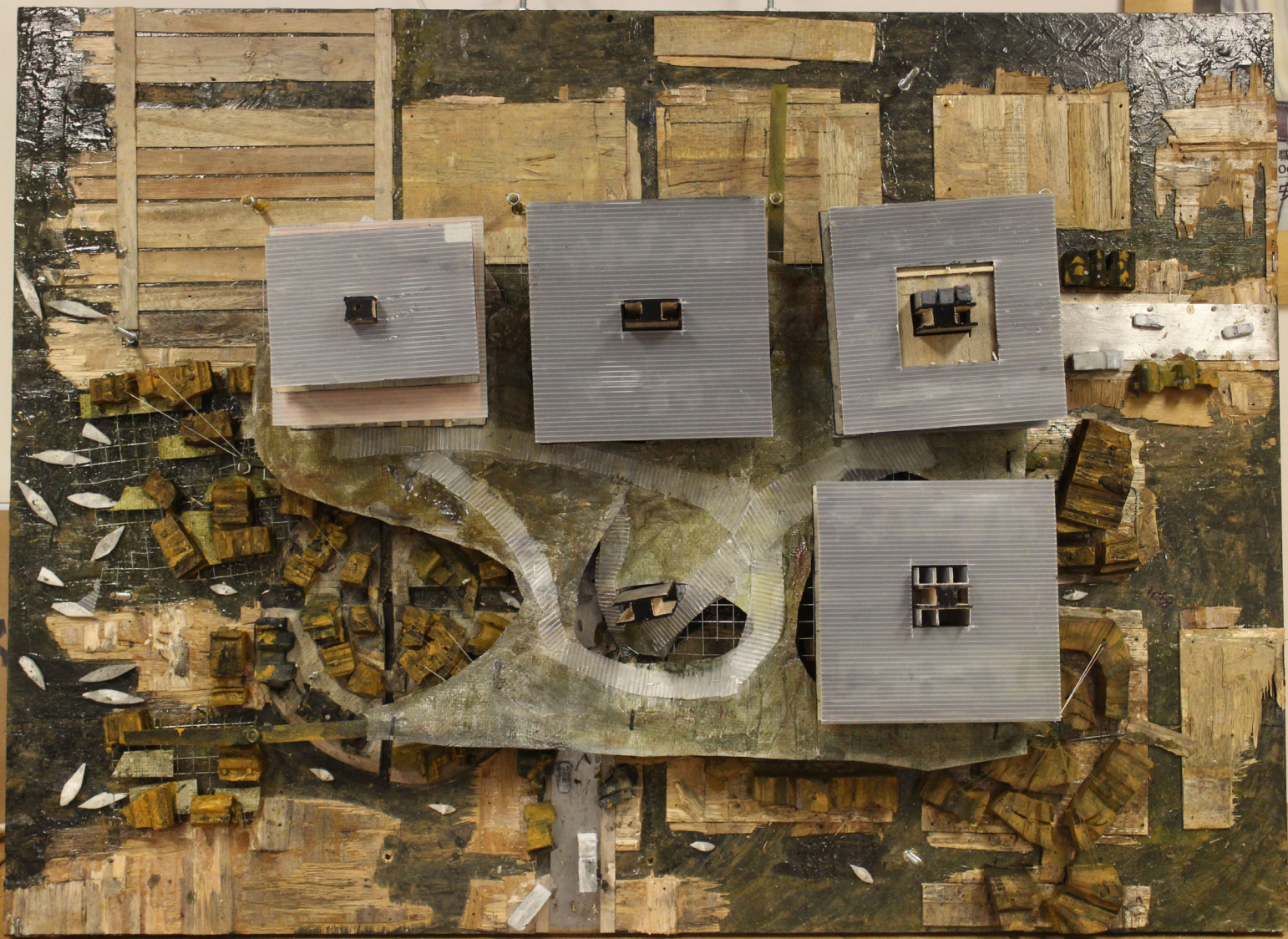




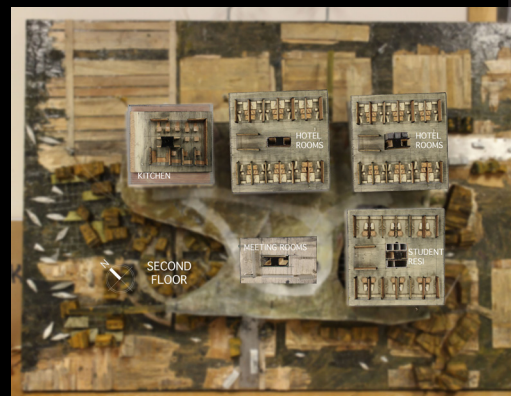
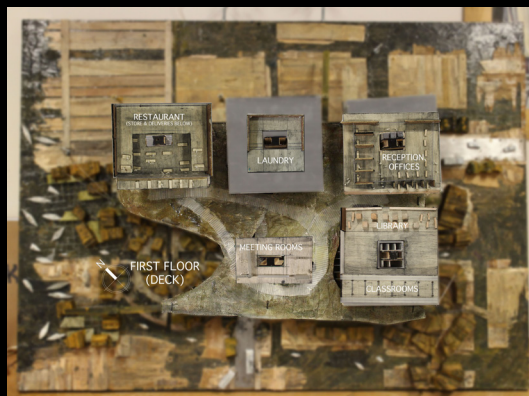
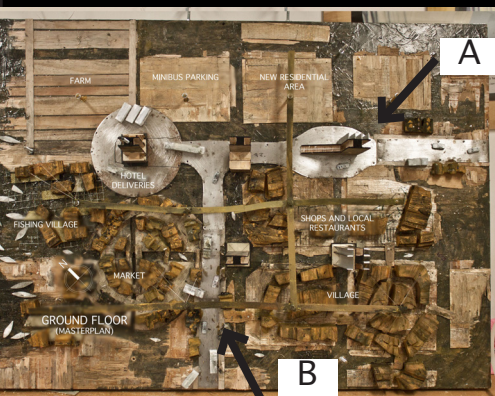
CONCEPT











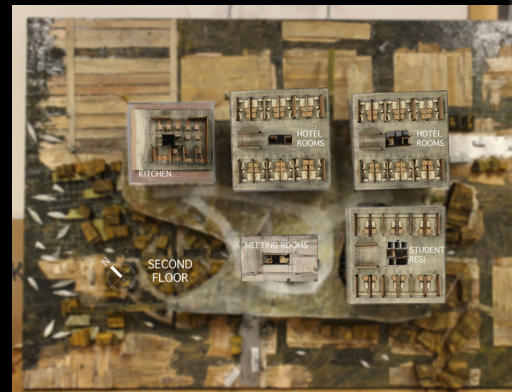
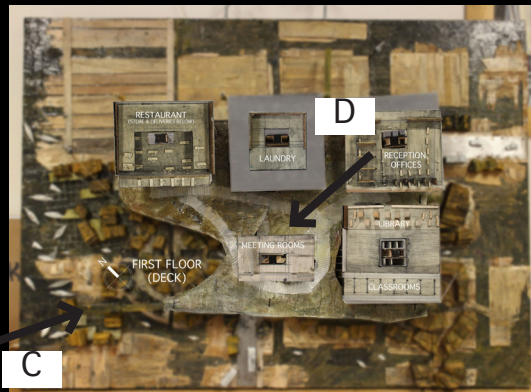
A



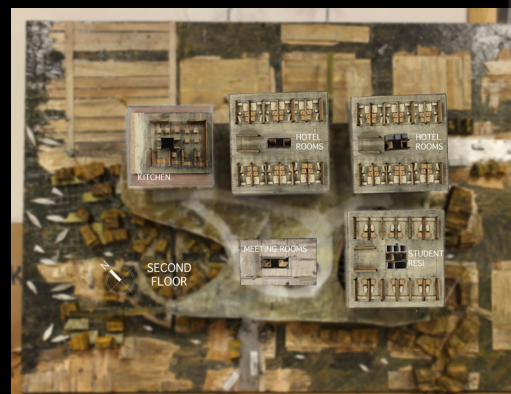
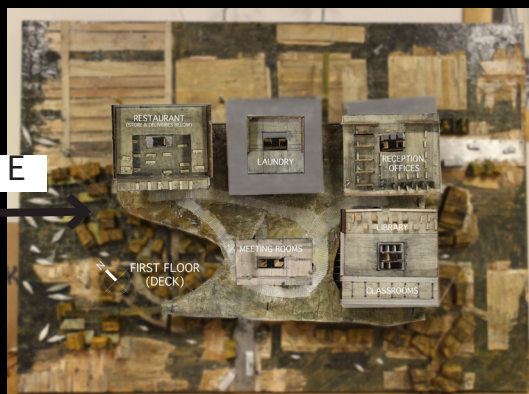
B











E



## PHASING





# STRUCTURE FOR HOTEL LEVEL

+ GROUND LEVEL DRAINAGE



# INFRASTRUCTURE FOR GROUND LEVEL

